

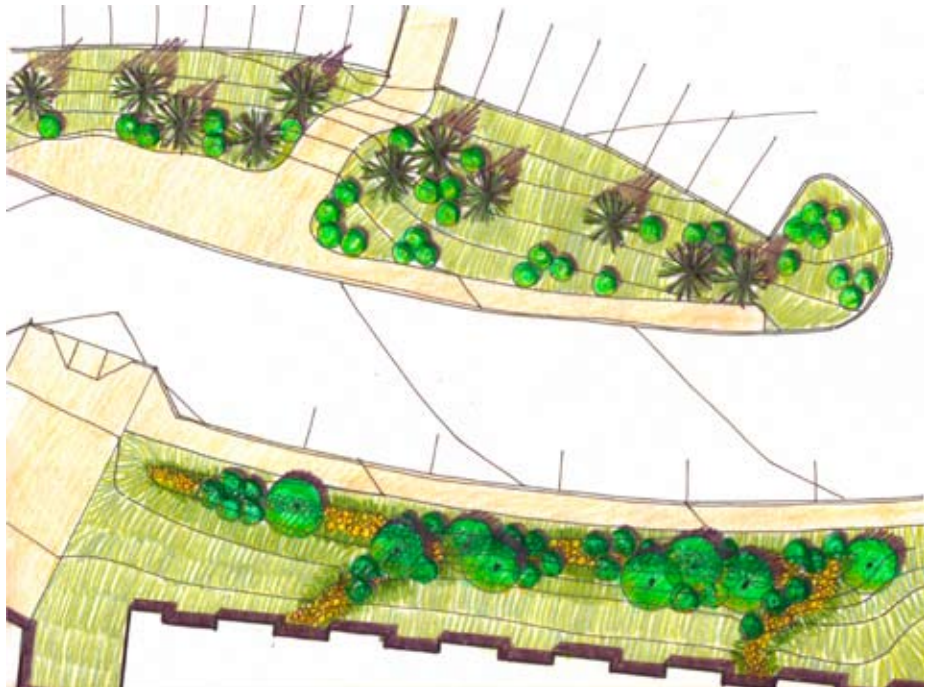
Colorado Mountain College had the opportunity to move from the confines of its downtown building to a new campus on the south side of the Colorado river at the base of a hogback. The junipers and pinon pines on the hogback created the inspiration for nestling the building in an arc of pines and taller shrubs.

Lime Green Design successfully argued that the terraced parking lot offered the opportunity to capture run-off by eliminating catch curbs, which in the process reduced construction costs. Bioswales designed into these island between the parking terraces captures run-off from the paved areas, and supports shrubs and shade trees similar to the ribbons of cottonwood lined local irrigation ditches. Native grasses and shrub seed is used to stitch the new landscape back into the existing context.

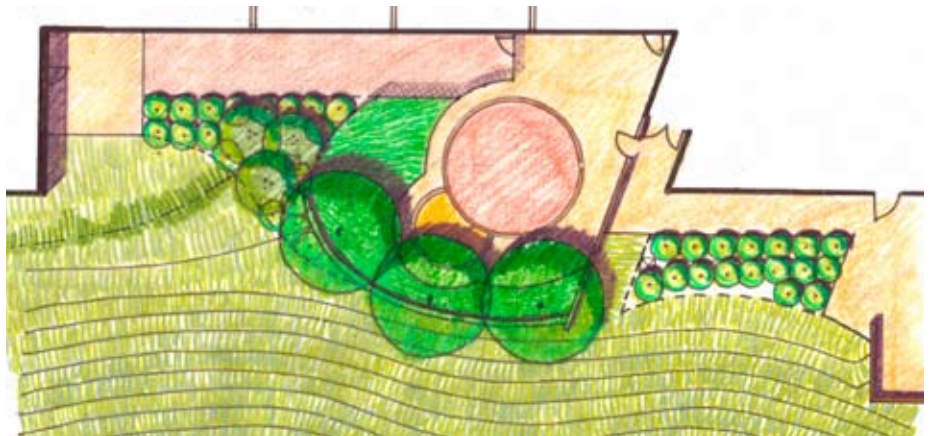
To the rear of the building the on-site day-care/ECE facility sits at the base of the hogback. A simple arced seat wall retains the slope, and in conjunction with tree and shrub planting creates an intimate oasis for outdoor play and discovery.



Parking Lot Island Bioswales



Main Entrance and Drop-off



ECE Play Area